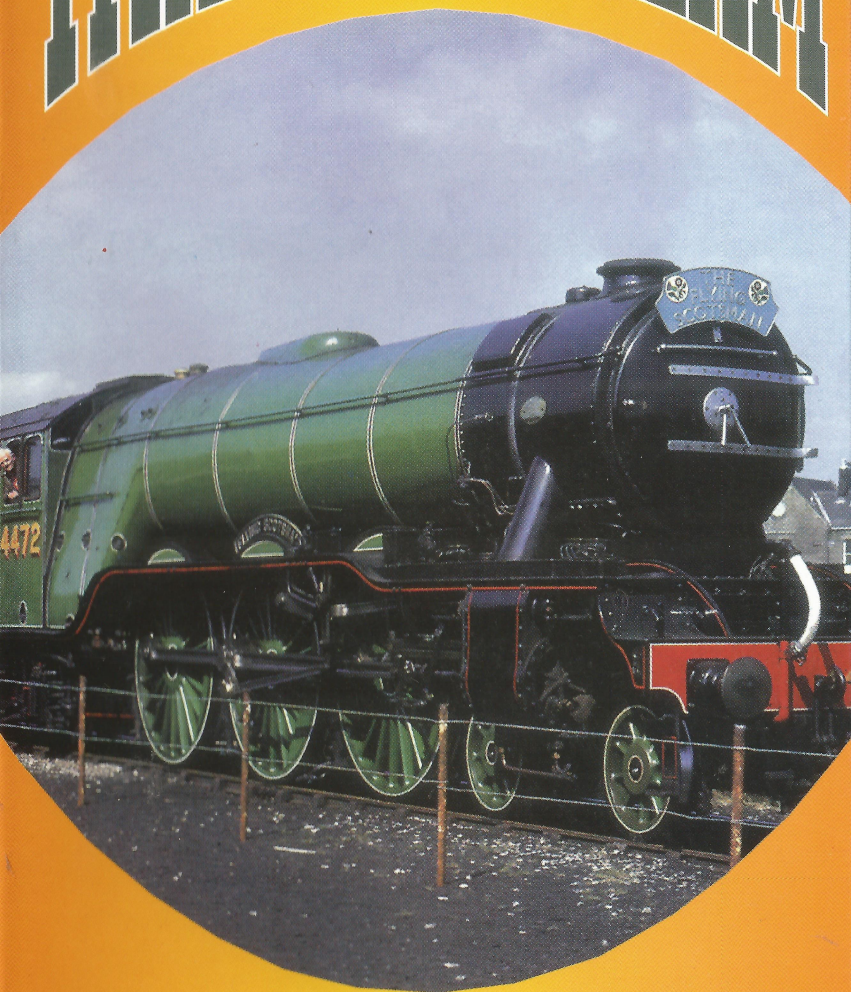


TITANS OF STEAM



INCLUDING
THE FLYING SCOTSMAN



STEAM OF STEAM

Railway

Volume 1

Number 1

AT 1101

TITANS OF STEAM

For almost 40 years, the 'big four' railway companies and British Rail turned out hundreds of powerful locomotives. This all-action programme looks at those which survived, and have found a new lease of life on preserved railways all over Britain.

Mighty Pacifics of the Southern railway, including the Merchant Navy and West Country Classes, now work on lines such as the Great Central, North York Moors and Swanage Railways.

Memories of the Great Western Railway live on its Castles, Kings, Manors and Halls, which still operate all over the South West.

The magnificent workhorses of the London, Midland and Scottish Railway steam on in the North and the Midlands.

The preserved locomotives of the London and North Eastern Railway include household names such as "The Flying Scotsman" and "Sir Nigel Gresley".

There are also War Department and British Rail designs, culminating in mighty tank engines and ten-coupled freight engines.

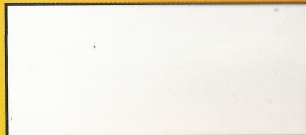
*Running time approximately
60 minutes.*

Artsmagic Limited

**PO Box 25, Ebbw Vale,
Gwent. NP3 5YG**



EXEMPT
This videogram is
exempt from BBFC
classification.



TITANS OF STEAM

For almost 40 years, the 'big four' railway companies and British Rail turned out hundreds of powerful locomotives. This all-action programme looks at those which survived, and have found a new lease of life on preserved railways all over Britain.

Mighty Pacifics of the Southern railway, including the Merchant Navy and West Country Classes, now work on lines such as the Great Central, North York Moors and Swanage Railways.

Memories of the Great Western Railway live on its Castles, Kings, Manors and Halls, which still operate all over the South West.

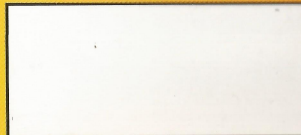
The magnificent workhorses of the London, Midland and Scottish Railway steam on in the North and the Midlands.

The preserved locomotives of the London and North Eastern Railway include household names such as "The Flying Scotsman" and "Sir Nigel Gresley".

There are also War Department and British Rail designs, culminating in mighty tank engines and ten-coupled freight engines.

*Running time approximately
60 minutes.*

Artsmagic Limited
PO Box 25, Ebbw Vale,
Gwent. NP3 5YG



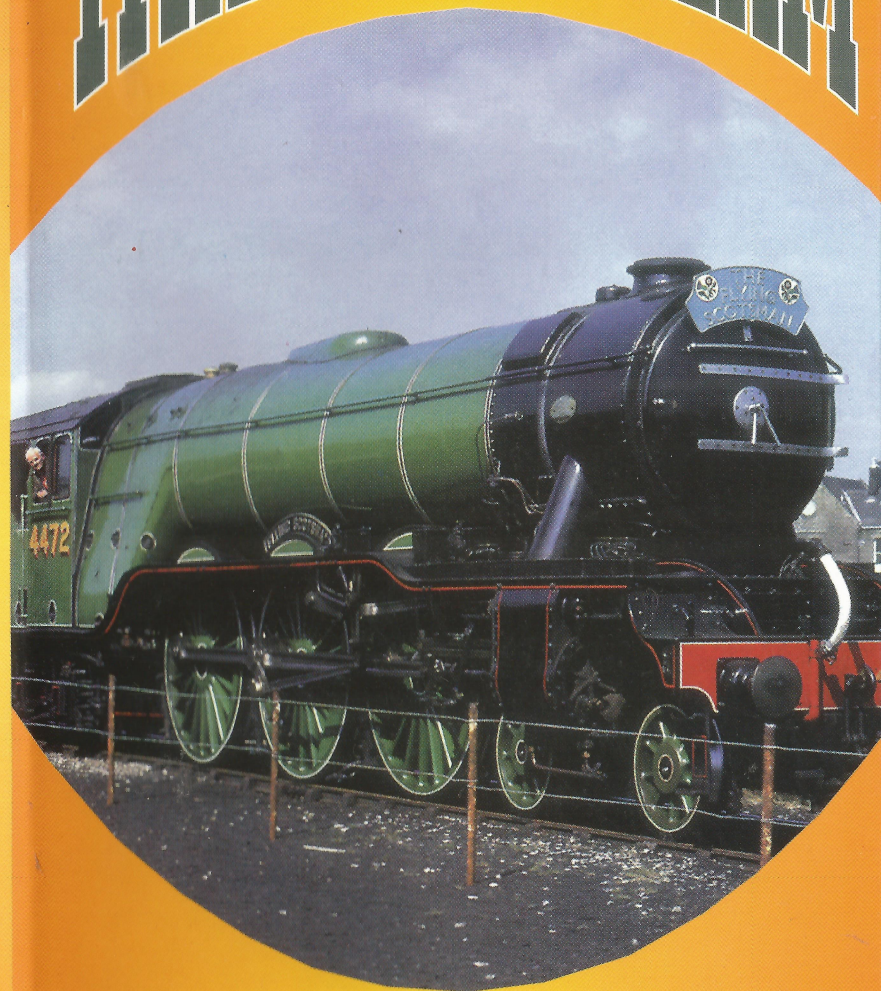
EXEMPT
This videogram is
exempt from BBFC
classification.



TITANS OF STEAM

*Railway
Volume 1
Number 1*
AT 1101

TITANS OF STEAM



**INCLUDING
THE FLYING SCOTSMAN**



Insert this side into recorder / Do not touch the tape inside

[VHS]



TITANS OF STEAM

AT 1101

©ARTSMAGIC LTD 1996



COPYRIGHT WARNING: Copyright exists in the film contained herein and the packaging. Any unauthorized copying, reproduction, publication, public performance, broadcasting, diffusing or adapting of the film or packaging in whole or in part is strictly prohibited.